



Beachhouses

DOWN UNDER

Stephen Crafti

Off the Main Track

V L A D I M I R I V A N O V , A R C H I T E C T



"It's not a particularly large house. But compared to the neighbours, it appears quite monumental".

This quiet beach hamlet, three-and-a-half hour's drive from the city, is not widely known, except by locals. While the beaches are pristine, the housing stock hasn't moved on from the 1950s and 1960s. The choice is either the fibro shack or the modest red brick home, built a few years later. So when architect Vladimir Ivanov unveiled plans for a contemporary beach house, the locals thought they were getting a new restaurant. "It's not a particularly large house. But compared to the neighbours, it appears quite monumental," says Ivanov, who regularly fielded enquires as to the function of the building.

Approximately 300 square metres in area, the house sits prominently on its corner site, with two street frontages. Designed for a couple, who operate a dairy farm during the week, the brief included separate accommodation for a parent moving from interstate. "Essentially my clients wanted two houses in one. But they wanted the design to appear as though it was one house from the street," says Ivanov.

The house is conceived as three forms that interconnect. The first form, the self contained apartment, is legible from the street and consists of a box with a double masonry wall, clad with timber laminate. This form is interconnected to

the main house, which comprises generous glazing at ground level and rendered masonry walls above. "The timber box anchors the house, which is quite transparent," says Ivanov.

The two-storey house features glazed windows on three sides and rendered masonry on the fourth, to prevent the harsher sunlight from entering the home. The open-plan kitchen and living areas on the ground floor have unimpeded views of the beach and pine trees. To ensure some privacy, Ivanov designed a series of seats/storage units made of fibro cement on the large deck, some featuring open shelves, others closed nooks. "The owners love collecting shells and driftwood from the beach. They can either hide it away or display these on the open shelves," says Ivanov.

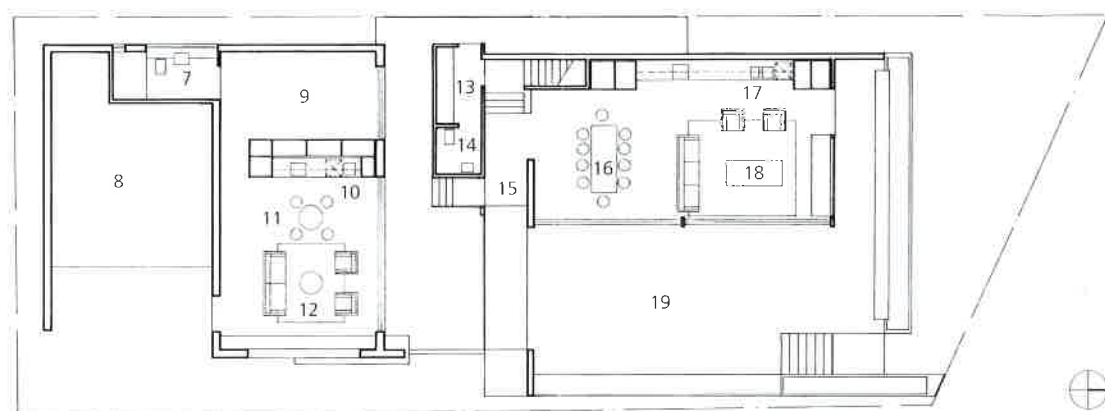
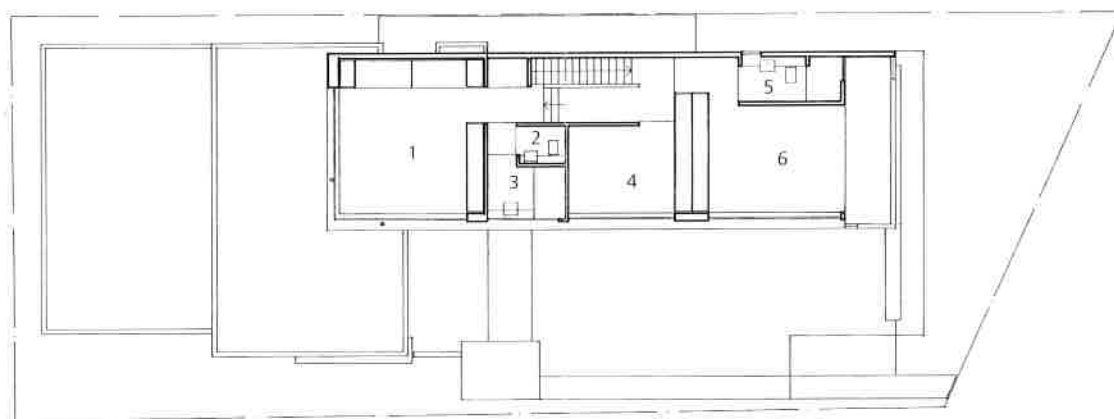
Upstairs affords the same generous views of the water, particularly from the main bedroom and balcony. Ivanov also included a second bedroom, together with a study/third bedroom, should additional guests stay over. "It's quite a simple design," says Ivanov, who selected robust materials to allow for sand being brought into the house. As Ivanov says, "I've provided extra-wide grooves for the timber deck. The sand can just be swept away".

Photography by Giles Westley









- | | |
|------------------|---------------|
| 1 Bedroom | 11 Dining |
| 2 W.C. | 12 Living |
| 3 Bathroom | 13 Laundry |
| 4 Study/bedroom | 14 Guest W.C. |
| 5 Ensuite | 15 Entry |
| 6 Master bedroom | 16 Dining |
| 7 Ensuite | 17 Kitchen |
| 8 Garage | 18 Living |
| 9 Bedroom | 19 Deck |
| 10 Kitchen | |



